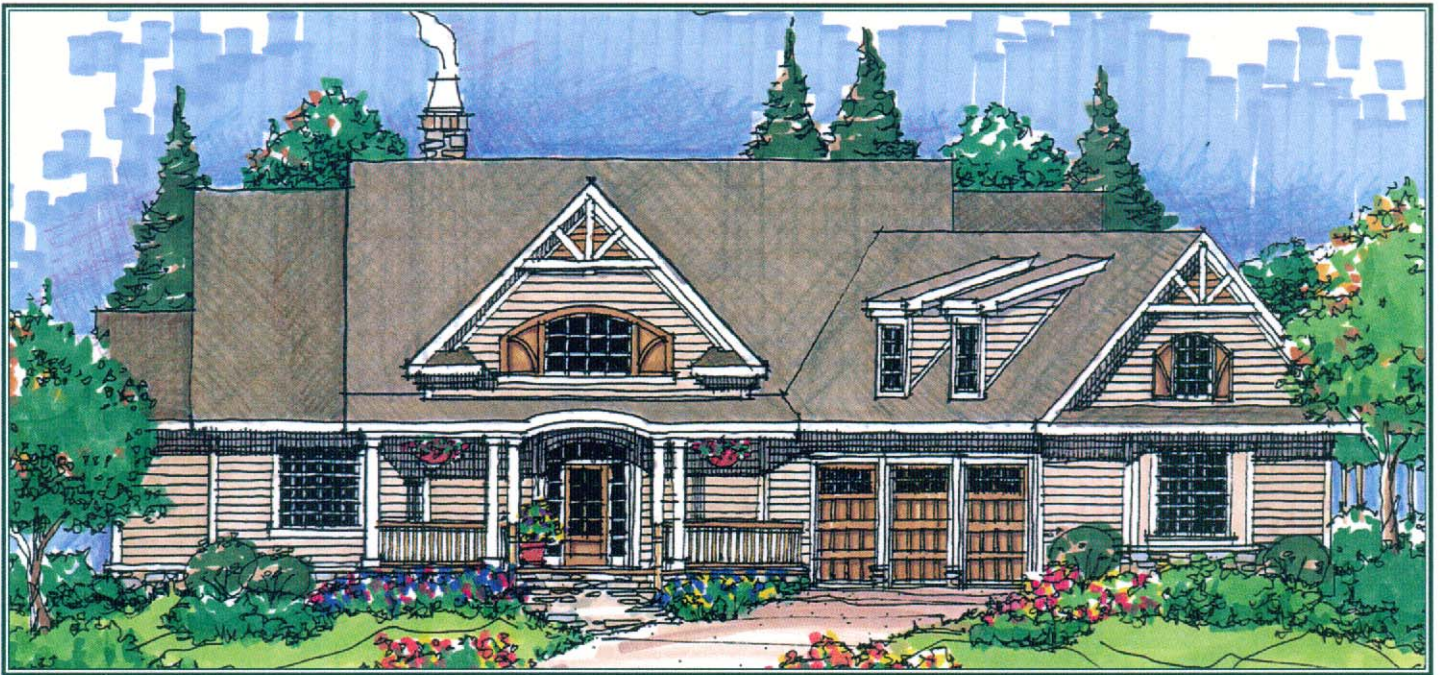
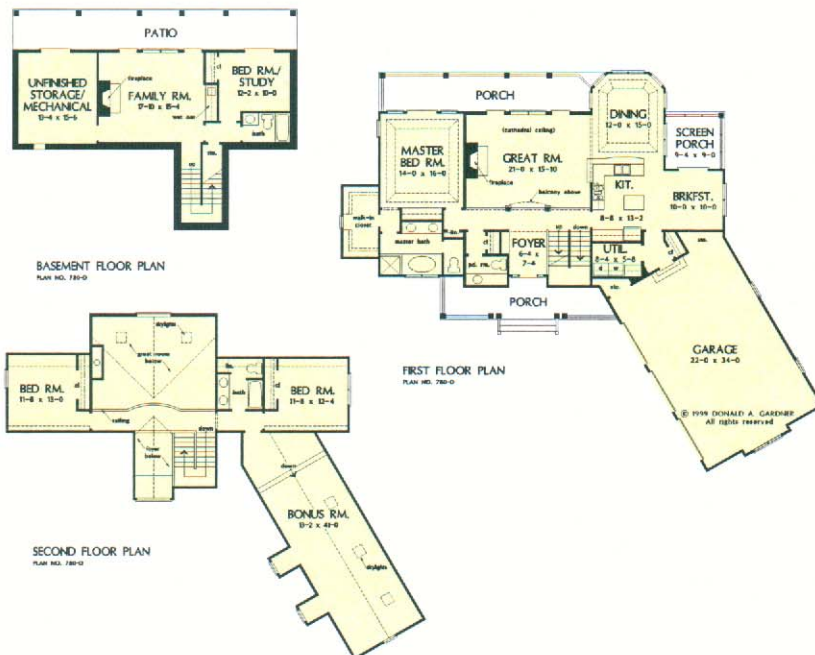


The Peekskill Plan 780-D



© 1999 Donald A. Gardner, Inc.



A stunning center dormer with arched window embellishes the exterior of this craftsman style home with walkout basement. The dormer's arched window allows light into the foyer with built-in niche. The second floor's hall is a balcony that overlooks both foyer and great room. A generous back porch extends the great room, which features an impressive vaulted ceiling and fireplace, while a tray ceiling adorns the formal dining room. The master bedroom, which has a tray ceiling as well, enjoys back porch access, a built-in cabinet, generous walk-in closet, and private bath. Two more bedrooms are located upstairs, while a fourth can be found in the basement along with a family room.

**SMOKY MOUNTAIN
CUSTOM HOMES, INC.**
Marketed by:
**SMOKY MOUNTAIN
RETREAT REALTY, INC.**
828-926-5300

Total Living Area.....2953 sq. ft.